

aapcsw

American Association for Psychoanalysis in Clinical Social Work

Spring & Summer 2019

newsletter

From the Co-Presidents

Jerry Floersch, PhD, MSW | Jeffery Longhofer, PhD, MSW

We are writing to report good news. Since our March meeting in Durham, we've added 65 new members. And while our membership campaign, One-2-One, has been a clear success, we need your continued support. Our membership now stands at 936. Thank you! But we have work to do. We'd like 200 more members before the end of the year. Help us reach our goal. One-2-One is what we do, and we count on each of you to recruit one new member during the summer and fall. If just one in four members would recruit one new member in the next six months, we could enroll more than 200 new members. Please join us in this effort—point a potential member to our website at www.aapcsw.org; show them the conference program; mention the new benefit, *Psychoanalytic Social Work*. You'll be hearing soon from our Membership chair, Lance Stern, about some ways you can continue to help us grow. If you have recruitment ideas, please contact Lance (lancestern@ymail.com).

There's more good news. At the March meetings, the AAPCSW board voted unanimously to make *Psychoanalytic Social Work*, published by Taylor & Francis, our official journal. We recently signed the contract, and members will soon receive a print version and have access to the online version. Members also now have free access to the online version of the *Journal of Social Work Practice*. It is our hope that with the adoption of *Psychoanalytic Social Work* as our official journal, our presence will be felt in the wider psychoanalytic community and beyond. And this is more than an affiliation: members will be encouraged to submit manuscripts and publish in this peer-reviewed journal. We wish to thank Jerry Brandell and Joel Kanter for their many efforts.

And we're happy to report that our March 2019 conference in Durham, North Carolina, "Intrigue-

Insight-Inquiry: Through Today's Psychoanalytic Lens," was a resounding success. A total of 365 attended. We wish to extend our deepest gratitude to the program committee and the conference chair, Penny Rosen. Penny makes these conferences happen—thanks, Penny! We also want to thank William Meyers for helping us with yet another Durham conference. (See the post-conference report on page 4.) The four plenaries were sensational: "The Efficacy of Psychodynamic Therapy: The Talking Cure in the Era of Evidence-Based Practice," by Jonathan Shedler; "Second Chances: Redemption and Reentry after Prison," by Elizabeth Hinton, and "They Hate Me Now, but Where Was everyone When I needed them? Trauma, Incarceration, and Containers That (Don't) Hold," by Elizabeth Kita; "On Considering Regrets: If I Could Turn Back Time," by Samoan Barish; and "Love, Longing, and Desire: On the Analyst's Erotic Subjectivity," by Steven Kuchuck.

In this issue . . .

From the Co-Presidents	1
Editor's Word	2
2019 Conference Report	4
Member Benefits News	6
Area Reps' Corner	7
Book & Journal Discounts	8
Member News	9
AAPCSW Boards	10
Membership Information	11

www.aapcsw.org

continued on page 3

editor'sword

Christie Hunnicutt, MSW, LCSW



The spring and summer seasons ushered in a wonderful array of events and activities represented across our membership group. The headliner event included diverse subject matter and clinical expertise that was well-represented at the 2019 AAPCSW conference, "Intrigue, Insight, Inquiry: Through Today's Psychoanalytic Lens," in Durham, North Carolina. This event offered a multiday experience of connection, learning, and honoring of tradition and legacy, captured beautifully by Penny Rosen, Cathy Siebold, and Bill Meyer in their conference report. This issue also highlights additional achievements that include increased membership following a successful member campaign and the exciting new addition of the *Psychoanalytic Social Work Journal* as the official AAPCSW journal. The member news and area report round out the content by offering an insightful review and inspiring achievements.

In response to the survey outcomes noted by the co-presidents, we at the *Newsletter* will be evaluating the layout and content coverage in the coming months and look forward to your feedback regarding exciting new changes. As we look toward the Fall issue, please send all wonderful accomplishments, experiences, news, thoughts, or ideas to us so that we may fully represent the content that is most relevant, up to date, and inclusive of subject matter that members are truly passionate about.

It is always important to acknowledge the contributions and show gratitude to all who contributed to the *Newsletter*, both directly and indirectly. Special thanks to Kelly Martin, Donna Tarver, Wendy Winograd, Barbara Matos, Jeffrey Longhofer, Jerry Floersch, Penny Rosen, Dan Buccino, Cathy Siebold, Bill Meyer, and all members who offered contributions to the content of this issue.

aapcsw corevalues

- Recognize the dignity and worth of each human being.
- Acknowledge the intersection of each individual's inner and outer worlds.
- Convey a psychoanalytic sensibility in our work with all populations and in all settings.
- Integrate concerns for social justice with clinical practice.
- Promote inclusivity and affirm the diverse identities of our colleagues and of those with whom we work.
- Cultivate a community of professionals that advocates for open inquiry and respect for difference.

Newsletter articles are opinion articles representing the authors' viewpoints and are not statements of any positions of AAPCSW itself. AAPCSW is not responsible for the accuracy or content of information contained in the articles.

aapcsw

The *AAPCSW Newsletter* is published three times yearly, in February, May, and October. Deadlines for submissions are January 15, April 15, and September 15.

Please address

the *Newsletter* at:

AAPCSW Newsletter

Christie Hunnicutt, *Editor*
79 Trumbull Street
New Haven, CT 06511

Phone: 203.676.5206

E-mail: christiemhunniccutt@gmail.com

AAPCSW Newsletter

Advertising Rates:

Full-page—\$700

6.25" w x 9.5" h

Half-page vertical—\$400

3" w x 9.5" h

Half-page horiz.—\$400

6.25" w x 4.625" h

Third-page vert.—\$300

1.875" w x 9.5" h

Third-page horiz.—\$300

6.25" w x 3.25" h

Quarter-page vert.—\$200

3" w x 4.625" h

Quarter-page horiz.—\$200

6.25" w x 2.25" h

Sixth-page vert.—\$150

1.875" w x 4.625" h

Eighth-page horiz.—\$100

3" w x 2.25" h

Please contact the editor for complete ad specifications.

From the Co-Presidents, cont. from page 1

We can't list here all the many important and exciting presentations, 47 altogether, but it is interesting to consider the range and diversity of topics:

“Racial Loneliness in Analytically-Informed Social Work Training”

“Unraveling Cultural Countertransference: The Experience of Western-Trained Caucasian Therapists Working with Asian-American Adults”

“Freud and Lacan Today: On Lacan's Return to Freud and Psychoanalysis in the Hospital Setting”

“Tarasoff Revised: The Clinician's Duty to Warn and Duty to Protect”

“Tolerating Difference Among Ourselves and Our Patients: How Mutual Recognition Regarding the Palestinian/Israeli Divide Enhanced our Clinical Work”

“Shadows of Multiple Realities: Intersecting Diversity Themes of Anti-Racism, Economic Distress and Clinical Practice”

“To Have and To Hold: Relational and Attachment Perspectives on the Treatment of Addiction”

“Reading and Writing the Case Study at the End of Privacy”

“Moving into Wholeness: Self-States and the Treatment of Trauma”

“The Social Justice Long-Game: Analytic Approaches to Bias and Contempt”

“Standing in the Twilight: A Relational Perspective on Working with(in) Psychotic States”

“The Problem of the Projector: Whiteness, Slavery, and Projective Identification”

“Is Patriarchy Inevitable: Rethinking the Freudian Myth”

“Working with Severe Social Problems: The Psychoanalytic Model Applied to Community Intervention in Portugal”

If you want to see the full program, the schedule is still on our website at www.aapcsw.org/events/conference.

We can report that our first AAPCSW preconference writing workshop was a great success, with 25 participants: senior clinicians, mid-career clini-

cians, newly minted MSWs, and students. All were interested in developing skills for writing and publishing clinical case studies. In the evaluations, some expressed interest in learning how to write a blog for the general public. Others have a longer history of writing but were looking for inspiration to try again. Here are some of the topics explored:

How to do a literature review using PEP

The utilization of APA format

The framing of case material in relevant theory

Ethical considerations in clinical writing

We owe a special thanks to Wendy Winograd and Sheila Felberbaum for helping us launch this exciting new initiative, and we look forward to working with them in the future as the board explores ways to develop the writing workshop (e.g., online, summer, and weekend workshop formats). This is a long-game effort to build capacity for our journal, for our conference, and for the next generation of psychoanalytic social workers and practitioner-scholars. If you have interest, please contact Wendy Winograd (wendywinograd@gmail.com) or Sheila Felberbaum (sfelberb@optonline.net).

More News

A survey of the AAPCSW membership was conducted in fall 2018 to consider organizational needs, ideas, and satisfaction. While one should be careful when generalizing findings from a subgroup of any population, this survey is valuable for stimulating discussion about future initiatives. The survey clearly shows a common concern about the need to bring new members into the organization. The data reveals an age gap: 6.8 percent of respondents are under 35. This distribution should cause us concern and encourage us to think about how to develop recruitment strategies like the One-2-One recruitment initiative launched at the 2019 conference. Respondents strongly conveyed (98 percent) a preference for receiving news and information through email and the newsletter, and some objected to the frequency and content of listserv posts. This may well suggest a need to rethink how we convey information, in print and online, and for what purposes: information regarding local events, client referrals, news, updates, ideas, and commentary. Some of what is important to our members may be getting lost in

continued on page 6

2019nationalconferencereport

From the Conference Chair & Program Consultants

Penny Rosen, MSW, LCSW, BCD-P, AAPCSW Immediate Past President, Conference Chair

Cathy Siebold, DSW, AAPCSW Past President, Conference Program Consultant

Bill Meyer, MSW, BCD, AAPCSW Past President, Conference Program Consultant

We were happy to welcome a full house of 365 attendees at our conference in Durham, NC. Kudos to our North Carolina colleagues and all the other committee members who helped make this a successful conference. Here are some highlights.

Jonathan Shedler's opening plenary "The Efficacy of Psychodynamic Therapy: The Talking Cure of the Era of Evidence-Based Practice" reminded us of important research regarding psychodynamic psychotherapy's efficacy. He elaborated on seven core features of contemporary psychodynamic therapy, and that when compared to other "evidence-based" treatments, demonstrated that all effective psychotherapies draw on psychodynamic principles. Participants felt invigorated and energized with "evidence-based" armor, and hope about the future permeated the atmosphere of the room.

On the same day, Susan Sherman continued this theme of research and its implications for our understanding of practice. As the discussant of the plenary film *Three Identical Strangers* (by Tim Wardle), she introduced the complex themes of professional ethics and the potential impact on development when there are early separations from one's siblings, differing parental experiences, and constitutional factors. Although disturbing, the documentary was riveting. We were engrossed into the inquiry of these issues and the underscoring of the impact of environment on developmental outcomes.

The next day, we were privileged to hear Elizabeth Hinton's plenary, "Second Chances: Redemption and Reentry after Prison." Ethical and moral issues related to reentry were examined through a lens of prison education, also viewing the role that higher education institutions can play. The implications for clinical work were seen through the psychosocial-economic factors of prison education. We were enthralled by the potential for societal change.

Complementing Dr. Hinton's presentation, Elizabeth Kita gave a deeply poignant plenary, "They Hate Me Now, but Where Was Everyone When I Needed Them?": Trauma, Incarceration, and Containers That (Don't) Hold." Her encounters with her patients and her countertransference reactions provided a powerful and mesmerizing narrative. Her deep appreciation of the sociopolitical factors affecting this all too often ignored prison population, and her ability to help us connect with their pligh, was illuminating.

On the final morning of the conference, AAPCSW past president Samoan Barish's creative plenary, "On Considering Regrets: If I Could Turn Back Time," took us on an enlivened psychological journey on the subject. We were enriched by the eloquence of her descriptions of personal experience. It gave us much to think about in the way that we often get stuck trying to preclude regrets, rather than contemplate their psychic use.

"Intrigue" followed with Steve Kuchuck's evocative plenary, "Love, Longing, and Desire: On the Analyst's Erotic Subjectivity," describing the power of the dyadic dynamics when the patient and therapist's erotic feelings are not foreclosed. Steve's generous exploration of his and his patients' erotic desires and the way that they can emerge in the clinical encounter was an important reminder of the central place of desire in our work with patients.

This sampling of our plenaries is illustrative of the quality and range of our 43 breakout sessions, which were paired papers, panels, or workshops. See the program, with a list of the conference committee members and the biographies of presenters and moderators, at www.aapcsw.org/pdf/events/2019/Schedule_AAPCSW_2019_Conference.pdf and www.aapcsw.org/pdf/events/2019/Biographies_AAPCSW_2019_Conference.pdf.

Our social events gave opportunities for collegial encounters, another important aspect of our biennial conferences. We began by visiting the Nasher Museum before our opening Thursday night reception at Parizade Restaurant. We continued the tradition of post-movie reception on Friday evening. On Friday we held a lunch reception, and Saturday was our biennial luncheon. The group events culminated in the Penguin Purple Soiree. Participants met at the 21c Museum Hotel for music, dining, and art exhibits—a *mélange* of experience.

Our conference continued its traditions by recognizing various members of our community. This time the awardees were Heather Craige and Cathy Siebold—Lifetime Achievement Award; Susan Sherman—Selma Fraiberg Award; Joan Berzoff—Professional Writing Award. Please see their intro-

ductions at www.aapcsw.org/news/awards/awards_03-30-2019.html.

Claudia Coleman, Susie Greenebaum, Paul Robinson, Briana Suslovic, and honorable mentions Michael Katz and Jared Morgenstern were recipients of the Diana Siskind Award for Excellence in Writing.

Conference attendees left nurtured by content that helps them in facing professional challenges. It seemed from early responses that they felt the conference overall promoted depth and breadth in its insights about contemporary clinical practice.

The conference was co-sponsored by the National Institute for Psychoanalytic Education and Research in Clinical Social Work, Inc. (NIPER), educational arm of AAPCSW, and the Psychoanalytic Center of the Carolinas (PCC).



March 28–31, 2019 • Durham, NC

Intrigue • Insight • Inquiry

Through Today's Psychoanalytic Lens

Conference Planners: Penny Rosen (Conference Chair), William Meyer (Conference Consultant), Cathy Siebold (Program Consultant)

Committee: Theresa Albini (Call for Papers Co-Chair), Karen Baker, Samoan Barish, Barbara Berger, Dan Buccino, Janet Burak (Book Exhibit Co-Chair), Margaret Fitts (Book Exhibit Co-Chair), Jerry Floersch, Scott Graybow, Cole Hooley, Joel Kanter, Judy Ann Kaplan, Richard Karpe, Jeff Longhofer, Rebecca Mahayag, Teresa Mendez, Brian Ngo-Smith, Barry Ostrow (Volunteers Co-Chair), Adriana Passini, M. Kim Sarasohn (Call for Papers Co-Chair), Susan Sherman (Student /Candidate Call for Papers Chair), Golnar Simpson, Mario Starc, Louis Straker, Ashley Warner (Volunteers Co-Chair), Wendy Winograd, Mary Wise (Exhibits Chair)

Readers: Jane Abrams, Judith Aronson, Andrea Alpert, Terrie Baker, Joan Berzoff, Karen Bloomberg, Margaret Bluhm, Kelly Bradham, Cathy Buirski, Nicole Buller, Janet Burak, Fanny Chalfin, John Chiamonte, Michael De Simone, Sheila Felberbaum, Velia Frost, Scott Graybow, Cole Hooley, Christie Hunnicutt, Richard Karpe, Molly Kiefer, Debra Kuppersmith, Carolyn Lee, Teresa Mendez, John Moynihan, Elissa Baldwin Murphy, Maryam Newman Razavi, Terri Onstad, Barry Ostrow, Adriana Passini, Nancy Perault, Karen Redding, Michele Rivette, Claire Rosenberg, Anne Segall, Norman Sohn, Donna Stanley, Christy Tronnier, Ashley Warner, Peter Wood

Student/Candidate Entry Readers: Susan Sherman, Joyce Edward, Valerie Frankfeldt, Naomi J. Schlesinger, Cathy Siebold, Donna Tarver, Ashley Warner, Peter Wood

Two New Benefits for AAPCSW Members + PEP

Jerry Floersch, PhD, MSW, AAPCSW Co-President

Jeffery Longhofer, PhD, MSW, AAPCSW Co-President

Barbara Matos, MS, AAPCSW Administrator

We are excited to announce that AAPCSW Members have two great, new benefits. Members will now receive the journal *Psychoanalytic Social Work* and have access to its online version. Members also now have access to the online version of the *Journal of Social Work Practice*.

We would also like to remind you of our ongoing member benefit for the PEP subscriptions. PEP provides online access to a number of psychoanalytic journals from the late 1800s until 2005, including Freud's *Standard Edition* and other well-known books. The *Psychoanalytic Social Work* journal became part of the PEP Archive in January 2012.

PEP subscriptions are \$80 per year and run

February 1 to January 31, with payment due by January 1. For first-time subscribers, there are also opportunities to join at a pro-rated fee during three additional subscription periods. If you do not have a subscription to PEP, the next available enrollment through AAPCSW is for the subscription period November 1, 2019, through January 31, 2020; the pro-rated subscription fee of \$20 is due on or before October 1, 2019. Should you have questions regarding a PEP subscription, please contact the AAPCSW administrator Barbara Matos at barbara.matos@aapcsw.org or 301.799.5120. To learn more about PEP, visit www.pep-web.org, and see page 8 for more book and journal discounts for AAPCSW members.

From the Co-Presidents, cont. from page 3

our means of communication; thus, future efforts should focus on strategies to improve communication.

Other questions highlight opportunities for growth. Respondents clearly indicated a wish for more local chapter events. Similarly, through the open-ended questions, members indicated they would like to see AAPCSW offer more continuing education, skills training, workshops, and seminars. Of the respondents, 40 percent wanted an AAPCSW journal—and we have succeeded! And many want the organization to assist and encourage more members to write case studies and give presentations at our biennial conference. This might suggest the need to offer regional conferences between the biennial meetings.

We're hoping you will take time to think about the survey results. We want your feedback and suggestions for how the organization could better serve the membership and our chapters. And we must im-

prove! The future of psychoanalytic clinical social work is at stake. We're hoping these data will help us make strategic decisions about how best to achieve our core mission. The AAPCSW has had many successful national meetings, and it is clear that more than 88 percent of those polled strongly identify with our organization and plan to remain members. We must establish what has worked to keep members engaged while also considering ways of bringing new voices into the organization. Please carefully think about these findings, ask questions, and bring to us new ideas.

Upcoming Elections

Finally, and very important, we are currently seeking nominations for president(s)-elect, treasurer, and at-large board member. Please make nominations or suggestions to either Jerry Floersch (jerry.floersch@gmail.com) or Jeffrey Longhofer (jeff.longhofer@gmail.com). Thank you!

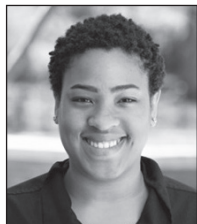
are representatives' corner

North Carolina

William S. Meyer, MSW, BCD, Co-Chair

Sonia Hsieh, MSW, Co-Chair

Report submitted by Niaisha Johnston, MSW student at the University of North Carolina at Chapel Hill.



Dr. Nancy McWilliams presented her paper “Ethics in Clinical Diagnosis: Implications of Thinking Dimensionally about Psychopathology” on October 20, 2018, at the Fall Seminar of the North Carolina Chapter of AAPCSW. Dr. McWilliams advocates for a return to a dimensional biopsychosocial assessment of psychopathology. While she notes that this approach is not new, it has currently been replaced with a categorical “check yes or no” approach to determine the presence or absence of syndrome symptoms. Perhaps this paradigm shift can be attributed to changes in the *DSM* and its divorce from sound clinical judgment. The ease and seemingly straightforwardness of the most current *DSM* is appealing to a new and inexperienced clinician or a seasoned yet overburdened clinician. Nevertheless, Dr. McWilliam argues that because of the complexity of real patients, thinking dimensionally establishes a human connection between client and clinician that medication considerations alone and evidence-based practices founded

on the ideal patient simply cannot achieve. A more nuanced approach to assessment and treatment prioritizes safety and adapts the treatment setting for a client who experiences psychosis or has the capacity to experience psychosis. Throughout her talk, Dr. McWilliams invited the audience to explore the many sides of what we know as sanity, normalizing the experience of psychosis and the possibility that at any point anyone could experience a loss of reality. She affirmed the idea that psychosis transcends conventional psychotic disorders.

Making a connection to social work, discussant Chris Erskine, LCSW, recognized in Dr. McWilliams’s paper that dimensional thought is similar to thinking in systems that social workers utilize in practice. Erskine described a clinical encounter in which she held space for a client who had become immobilized between the present and the terror of the past, a brief moment of psychosis. She concluded with references to several recent articles that underscored Dr. McWilliams’s argument for the importance of a therapeutic relationship for patients who experience psychosis. Among those articles is Thomas Ogden’s 2008 essay “Bion’s Four Principles of Mental Functioning,” in which he discusses the principle that “it takes two to think one’s disturbing thoughts.”

The Newsletter regrets the accidental omission of this report from a previous issue. Our apologies to Niaisha Johnston, William Meyer, and Sonia Hsieh.

AAPCSW Area Chapters • Northern California • Southern California: Los Angeles • Southern California: Orange County • Colorado • Connecticut • District of Columbia • Florida • Illinois • Indiana • Maryland • Massachusetts • Michigan / Ohio • Minnesota • Missouri • Nebraska • New Jersey • New York • North Carolina • Pennsylvania • Washington State • **See page 10**

new professionals

mentors hip program

An opportunity for AAPCSW members who are seasoned professionals (eight or more years post-license) to work with new professionals, giving guidance and direction to help with career development and career enhancement.

Contact Cole Hooley, LMSW, Co-Chair • colehooley@gmail.com, 801.636.3634

Books

Guilford Press: As a sponsoring organization of the *Psychodynamic Diagnostic Manual, Second Edition (PDM-2)*, edited by Vittorio Lingiardi and Nancy McWilliams, Guilford Press is offering our members an exclusive member benefit of 25% off sitewide on all items, with free shipping. View the books at www.guilford.com/p/lingiardi.

Journals

A discount is offered to AAPCSW members for any of the journals listed below.

Taylor & Francis

Psychoanalytic Social Work
Two issues/year **FREE**



Smith College Studies in Social Work
\$24 for four issues/year (reg. \$76)

Journal of Infant, Child, and Adolescent Psychotherapy
\$78 for four issues/year (reg. \$105)

The Psychoanalytic Quarterly
\$106 for print + online

Make check payable to Taylor & Francis or provide credit card information and signature. Mail with form to Taylor & Francis Group, LLC, 530 Walnut St., Suite 850, Philadelphia, PA 19106. Or call 800.354.1420, ext. 4, for Customer Service. Outside the US: Contact customerservice@taylorandfrancis.com.

Group for the Advancement of Psychodynamics and Psychotherapy in Social Work (GAPS)

Journal of Social Work Practice
\$60 for print (four issues) + online; **online only FREE**

For further details, please e-mail info@gaps.org.uk. Mail check and completed order form to Dr. Pamela Trevithick, GAPS, 10 Saville Court, Saville Place, Clifton, Bristol, BS8 4EJ. Online subscription form: gaps.org.uk/join/associate.

Springer

Clinical Social Work Journal
\$42 per annual edition published in four issues

Make check payable to Springer Science and Business Media or provide credit card information and signature. Include discount code **AAP 02** and your AAPCSW member number. Mail with form to Springer Science and Business Media, Society Services Department, 233 Spring Street, 7th floor, New York, NY 10013.

Mental Health Resources (MHR)

Eastern Group Psychotherapy Society Journal
\$50 for four issues/year (reg. \$55)

Make check payable to MHR or provide credit card information and signature. Include discount code **AAP 03** and your AAPCSW member number. Mail with form to MHR, 65 Partition Street, Saugerties, NY 12477. Or call 877.647.0202 with credit card information.

William Alanson White Institute

Contemporary Psychoanalysis Journal
\$56 for four issues/year (reg. \$70)

Make check payable to Contemporary Psychoanalysis or provide credit card information and signature. Include discount code **AAP 04** and your AAPCSW member number. Mail to Contemporary Psychoanalysis, P.O. Box 465, Hanover, PA 17331. Or call 877.647.0202 with credit card information.

Sage Productions

The Journal of the American Psychoanalytic Association, 2010
\$121 for six issues/year (reg \$148)

Make check payable to Sage Publications or provide credit card information and signature. Include discount code **AAP 06** and your AAPCSW member number. Mail with form to Sage Publications, Inc., c/o Customer Services, 2455 Teller Road, Thousand Oaks, CA 91320. Or contact 800.818.SAGE, 805.499.0721, or journals@sagepub.com.

Online forms and links at www.aapcsw.org/membership/benefits/journals.html

Journal Order Form

Please complete separate form for each publisher address.

Journal Title(s) _____

 Last Name _____
 First Name _____
 Mailing Address _____
 City / State / Zip _____
 AAPCSW Member Number _____
 AAP Discount Code (if any) _____

Payment

Check enclosed (see descriptions for payable-to information) or
 Visa MasterCard American Express
 Card Number _____
 Exp. Date _____ 3- or 4-Digit Security Code _____
 Billing Address _____
 City / State / Zip _____
 Signature (as on card) _____
 Print Name _____

membernews...

Amy Olson, LCSW, CEDS, enjoys sharing analytic ideas with wider audiences. This year she began introducing psychoanalytic concepts “through the back door” at local community dance classes. She encourages student creativity through free association, hesitation, play, and mirroring, along with rhythmic qualities such as heartbeat and breath. And of course lots of sweat, fun, and funkiness.



Her classes combine freestyle, improvisational movement with visual art, history, fairy tales and myths, pop culture, and various forms of music. Longer workshops include an element of student art making. Class themes feature different aspects of the human experience. In June, students explored “empathy” through Pinks Floyd’s concept album *Dark Side of the Moon*.

Amy has been a practicing psychotherapist for

nearly twenty years in Cary, NC. She is a certified eating disorders specialist and supervisor with the International Association of Eating Disorders Professionals and received APsaA’s Teachers Academy fellowship in 2016. She will complete a certificate in Expressive Arts Therapy in 2020.

AAPCSW co-president-elect **Teresa Mendez**, LICSW, LCSW-C, was the guest editor of the most recent issue of the peer-reviewed journal *Psychoanalytic Social Work* (vol. 26, no. 1), the newly designated official journal of AAPCSW. Devoted entirely to race and psychoanalysis, the special issue includes important and original articles by Teresa and AAPCSW members Beth Kita and Ryan Parker, as well as timely and insightful contributions by Anton Hart, Daniel Gaztambide, and Alexandra Jamali. This entire special issue of *PSW* will surely become an essential addition to the psychoanalytic literature and bodes well for increased exchange between AAPCSW and *PSW*. See www.tandfonline.com/toc/wpsw20/current.

What’s your news? Graduations, presentations, publications, awards, appointments, exhibits, and so on are all items the AAPCSW membership would like to acknowledge in the this column. Feel free to include a photo. **New to AAPCSW?** We invite you to introduce yourself. Contact the *Newsletter* editor, Christie Hunnicutt, at christiemhunnicut@gmail.com.

aapcsw aims & purposes

- To represent and protect the standing and advancement of psychoanalytic social work practitioners and educators.
- To provide an organizational identity for social work professionals engaged in psychoanalytically informed practice.
- To promote and disseminate the understanding of psychoanalytic theory and knowledge within the social work profession and the public.
- To affect liaisons with other organizations and professions who share common objectives for social work and the advancement of psychoanalytic theory and practice.
- To advocate for the highest standards of practice and for quality mental health care for the public.
- To bridge social work and psychoanalytic discourses by integrating concerns for social justice with clinical practice, and to conceptualize psychoanalytic theory and practice within its broader social-political context.

**Board of Directors
Executive Committee**

Co-Presidents

Jerry Floersch, PhD, MSW
jerry.floersch@gmail.com • 216.346.3469
Jeffery Longhofer, PhD, MSW
jeff.longhofer@gmail.com • 732.932.9758

Past President

Penny Rosen, MSW, BCD-P (2013-15);
Acting President, 2016-17

Co-Presidents Elect

Dan Buccino, MSW, LCSW-C, BCD
danbuccino@aol.com • 410.881.5425
Teresa Méndez, MSW, LCSW-C
tmendez@baltimorepsychotherapy.org
202.810.2038

Secretary

Wendy Winograd, DSW, LCSW, BCD-P
wendywinograd@gmail.com
201.919.0108

Treasurer

Michael De Simone, PhD, LCSW
mikeb2s2@aol.com • 718.650.9000

Member-at-Large for Small Areas

Susan Bokor Nadas, LICSW
sbnadas@gmail.com • 617.999.8458

Members-at-Large

Rebecca Mahayag, MSW, LCSW-C
rebeccamahayag@gmail.com
301.651.8711
Brian Ngo-Smith, LCSW, BCD
brsmith2368@gmail.com • 303.886.8926

*Member-at-Large / Liaison
to Professional Organizations*

Barbara Berger, PhD, LCSW, BCD
bbergerphd@sbcglobal.net • 303.886.8926

**Advisory Board
Committees**

2019 National Conference

Penny Rosen, MSW, BCD-P
rosenpmsw@aol.com • 212.721.7010

Board Listserv

Joel Kanter, MSW, Moderator
joel.kanter@gmail.com • 301.585.6126

Child & Adolescent

Karen E. Baker, MSW, Co-Chair
kembaker1@comcast.net
734.996.8185

Wendy Winograd, LCSW, BCD-P, Co-Chair
wendywinograd@gmail.com
201.919.0108

Diversity & Social Action

Golnar Simpson, PhD, LCSW, Chair
golsimpson@verizon.net • 703.356.3033

Graduate Education

Mario Starc, PhD, LCSW, BCD, Co-Chair
mariostarc@pacbell.net • 510.883.0156

Margaret Arnd-Caddigan, PhD, LCSW,
Co-Chair
arndcaddiganm@gmail.com
252.258.2636

Hospitality

Carol Thea, LCSW, BCD, Co-Chair
csthea1@aol.com • 212.861.3308

Memberships

Lance Stern, LCSW, Chair
lancestern@ymail.com • 201.378.3205

New Professionals

Cole Hooley, LMSW, Co-Chair
colehooley@gmail.com • 801.636.3634

Jennifer Kurland, LMSW, Co-Chair
jakurland@gmail.com • 908.507.6472

Angela Rae English, MSW, *Comm. Member*
rae.english@gmail.com • 314.361.7075

Newsletter

Christie Hunnicutt, MSW, LCSW, *Editor*
christiehunnicut@gmail.com
203.676.5206

Wendy Winograd, DSW, LCSW, BCD-P,
Book & Film Review Editor
wendywinograd@gmail.com
201.919.0108

Donna Tarver, MSSW, *Consultant*
dftarver@sbcglobal.net • 214.691.2171

Online CE

Benjamin Lang, MSc, Co-Chair
blang1@luc.edu • 608.797.4227

Thomas Clancy, Co-Chair
thomasclancy89@gmail.com

Online Monograph

Sheila Felberbaum, MSW, LCSW, BCD,
Co-Editor-in-Chief
sfelberb@optonline.net

Debra KupperSmith, MSW, LCSW,
Co-Editor-in-Chief
debrakupperSmith@gmail.com

Public Relations

Penny Rosen, MSW, BCD-P, Chair
rosenpmsw@aol.com • 212.721.7010

Debra KupperSmith, LCSW, MS
debrakupperSmith@gmail.com
914.693.8631

Adriana Passini, MS, LCSW
adrianapassini@aol.com • 212.505.3588

Richard Karpe, LCSW, BCD-P
rjkarpe@att.net • 212.777.0035

Scott Graybow, PhD, LCSW
scottgraybow@yahoo.com • 917.715.5489

Scholarship

Jerry Floersch, PhD, LCSW, Chair
jerry.floersch@gmail.com • 216.346.3469

Social Media

Louis Straker, LCSW-C, Co-Chair
loustraker@gmail.com • 443.478.3670

Benjamin Lang, MSc, Co-Chair
blang1@luc.edu • 608.797.4227

•

Administrator

Barbara L. Matos, MS
barbara.matos@aapcsw.org • 301.799.5120

Area Representatives

Northern California

Velia Frost, LCSW, Co-Chair
vkf1@mac.com • 415.387.9991

Saralie Pennington, MSW, LCSW, Co-Chair
saraliep@sbcglobal.net • 415.550.2413

Southern California

Los Angeles Chapter

Samoan Barish, PhD, DSW, MSW, Co-Chair
samoanb7@gmail.com • 410.881.5425

Lynn Rosenfield, PhD, LCSW, Co-Chair
lynnrosenfield@yahoo.com
310.392.9144

Orange County Chapter

Karen K. Redding, LCSW, PhD, Chair
kredding@mac.com • 949.715.7007

Graciela Rodriguez, LCSW,
Membership Liaison
graciela6@aol.com • 949.363.9185

Colorado

Brian Ngo-Smith, LCSW, BCD, Chair
brsmith2368@gmail.com • 303.886.8926

Connecticut

George Hagman, LCSW, Chair
gahagman@optonline.net • 203.253.3033

District of Columbia

Joel Kanter, MSW, Co-Chair
joel.kanter@gmail.com • 301.585.6126

Rebecca Mahayag, LCSW-C, Co-Chair
rebeccamahayag@gmail.com
301.651.8711

Florida

Mark L. Ruffalo, LCSW, *Mem. Liaison*
mlruffalo@gmail.com • 727.266.0270

Illinois

Theresa Albini, MSW, LCSW, BCD, Chair
tkalbini@aol.com • 312.222.0575

Indiana

Andrea Barbour, MA, LMFT, *Mem. Liaison*
andreabarbourmft@gmail.com
812.764.4931

Kentucky

Michael Spare, MS, BCD, *Mem. Liaison*
michaelspare@yahoo.com
606.438.8499

Maryland

Dan Buccino, MSW, BCD, Co-Chair
danbuccino@aol.com • 410.881.5425
Teresa Méndez, MSW, Co-Chair
tmendez@baltimorepsychotherapy.org
202.810.2038

Massachusetts

Susan Bokor Nadas, LICSW, Chair
sbnadas@gmail.com • 617.999.8458

Michigan / Ohio

Karen E. Baker, MSW, Co-Chair
kembaker1@comcast.net • 734.996.8185

Lisa Larson, LMSW, Co-Chair
lrlarson@gmail.com • 734.635.9365

Minnesota

Beverly Caruso, MSW, Chair
bevcaruso@gmail.com • 612.374.2618

Missouri

Angela Rae English, MSW, *Mem. Liaison*
rae.english@gmail.com • 314.361.7075

Nebraska

Lynn Anderson DeMott, LICSW,
Mem. Liaison
lynnedemott@hotmail.com
402.330.1537x14

New Jersey

Wendy Winograd, DSW, LCSW, BCD-P,
Co-Chair
wendywinograd@gmail.com
201.919.0108

Deborah Bunim, PhD, MSW, Co-Chair
dbunim4@gmail.com • 201.569.7575

New York

Penny Rosen, MSW, BCD-P, Chair
rosenpmsw@aol.com • 212.721.7010

Janet Burak, MSW, LCSW,
Co-Mem. Liaison

jburak3@nyc.rr.com • 212.362.1866

Danita Hall, MSW, LCSW,
Co-Mem. Liaison
danitahall@me.net • 518.439.9599

North Carolina

William S. Meyer, MSW, BCD, Co-Chair
william.meyer@duke.edu
919.681.6840

Sonia Hsieh, MSW, Co-Chair
hsieh.sonia@gmail.com

Pennsylvania

Jane Abrams, DSW, LCSW, Chair
jabramsdsw@gmail.com • 215.564.5188

Washington State

Becca Leitman, LICSW, Chair
beccaleitmanlicsw@gmail.com
206.475.8422

American Association for Psychoanalysis in Clinical Social Work

AAPCSW promotes psychoanalytic education, advances clinical social work, facilitates the production and dissemination of knowledge, and advocates for high standards of practice. The AAPCSW website (www.aapcsw.org) offers an array of information about AAPCSW. Information on benefits, listservs, programs (both local and national), activities, items of interest, our history, resources, newsletters, video series, and other areas of interest can be found there.

Want to Join AAPCSW?

You have two options

Online: At www.aapcsw.org, go to **Membership / Join**, where you can complete the membership form and pay with a credit card or PayPal; you may also send a check (see address below).

By Mail: At www.aapcsw.org, go to **Membership / Join by Mail** and download and print the membership form. Return the completed form with your payment (check payable to AAPCSW or credit card information) to AAPCSW; Attn: Barbara Matos, MS, AAPCSW Administrator; PO Box 67; Boonsboro, MD 21713.

Already a Member?

Here are some helpful things to know about our current membership system and your AAPCSW membership

Username: Your email address is your username, unless you change it in your **Member Profile**.

Password: When you joined, you were assigned a password by our membership system. Please make certain that you save your password where you will be able to locate it. Nobody has access to your password but you! If you change your password and want it to be kept in your member profile, you can send it to the Administrator (barbara.matos@aapcsw.org) and ask that it be added to **Notes** in your profile.

Resetting Username/Password: If you forget either your username or password (or both), go to www.aapcsw.org and click on the **Get Help with Username and Password** link. You will receive an email that will allow you to reset one or the other (or both). Again, please make certain that you save this information where you will be able to locate it.

Membership Renewal Notices: The current database will send you a reminder regarding renewal 30 days prior to the expiration date of your membership. If you do not renew, you will receive another

reminder at 14 days prior to the expiration date and again at 7 days. If you do not renew by the end of your current membership, a notice of expiration of membership will be sent. At that time, you are moved to inactive membership and removed from any listservs you may have joined, since those are a member benefit. *Please note: If you renew after an inactive membership, you will need to request to be added back to listservs.*

Member Profile: You can edit your **Member Profile** at any time by going to www.aapcsw.org. After logging in, click on **Member Center**, then **My Profile**, then **Edit Profile**. If you make any changes, please remember to click **Save** when you are done.

Email: AAPCSW is an email-driven membership organization. If your email has changed, please log in and update your **Member Profile**. Otherwise, you will miss important AAPCSW notifications.

Need to Renew Your Membership?

You have three options, none of which takes long!

Online: Log in at www.aapcsw.org and go to **Membership / Renew Online**, where you can renew quickly with a credit card or PayPal; you may also send a check (see address below).

By Mail: Send a check payable to AAPCSW to AAPCSW; Attn: Barbara Matos, MS, AAPCSW Administrator; PO Box 67; Boonsboro, MD 21713.

By Phone: Contact Barbara Matos, Administrator, at 301.799.5120.

Membership Questions?

Barbara Matos, MS, AAPCSW Administrator

barbara.matos@aapcsw.org | 301.799.5120

aapcsw

**American Association for
Psychoanalysis in Clinical Social Work**

PO Box 67, Boonsboro, MD 21713

PRESORTED
FIRST CLASS MAIL
US POSTAGE PAID
RALEIGH, NC
PERMIT #1854

newsletter

